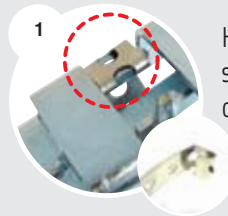
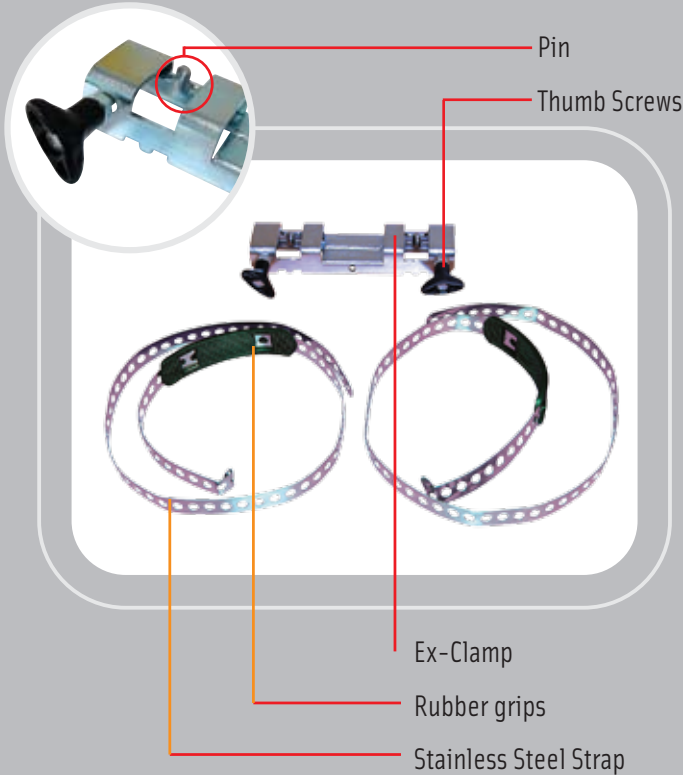
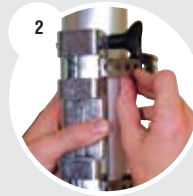


EX CLAMP

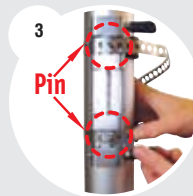
The Ex-Clamp is a versatile bracket which can be attached to any pole with a diameter of 50mm to 300mm. The Ex-Clamp can be used with the Ex-Disc, Flying, Feather, Wing and Boulevard Banners.



1 Hook the bent end of the strap onto the small inner pin as circled. Repeat with the other strap.



2 Position the clamp onto the pole with the straps. Position the rubber grips in a way so when tightening the clamp they will assist with the grip on the pole.



3 Wrap the strap around the pole and hook the closest hole onto the pin on the clamp.



4 **To tighten the clamp onto the pole, fasten the top and bottom evenly.**
It is best to alternately turn the top knob twice, then the bottom knob twice.



5 Continue wrapping the rest of the strap around the pole and keep hooking the closest hole onto the pin and sliding the straps inside the rubber grips. Remember to tighten each thumbscrew after each wrap around pole.



1 For use with the Flying, Feather and Wing banners, insert the mount then close the catch to secure.

FLYING, FEATHER & WING BANNER EX-CLAMP MOUNT

